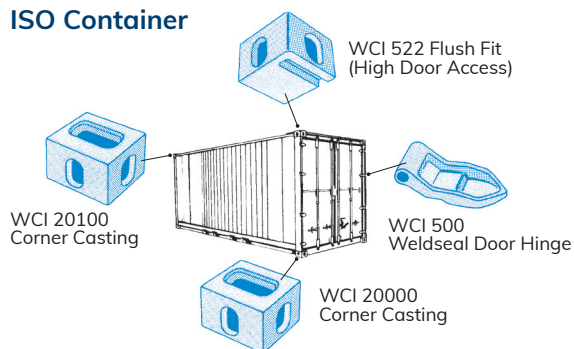
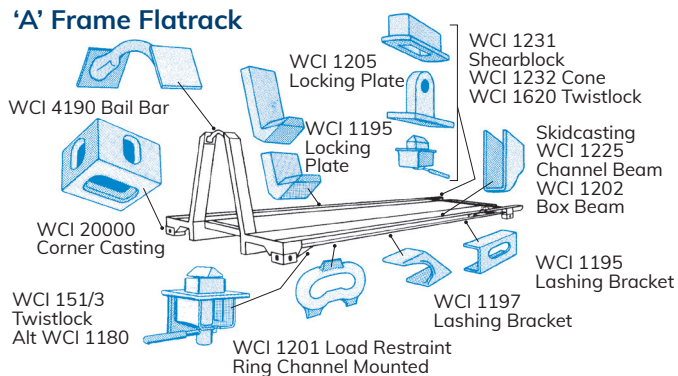


Good ideas in practice

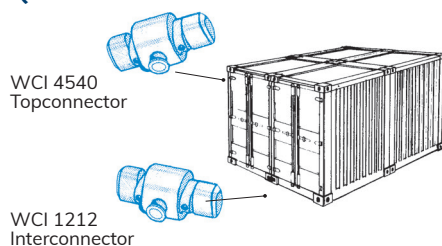
ISO Container



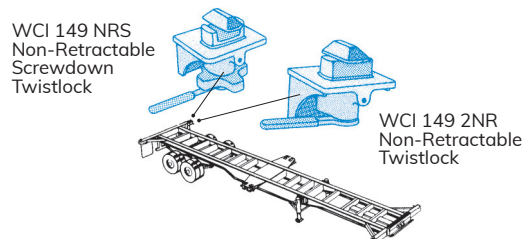
'A' Frame Flatrack



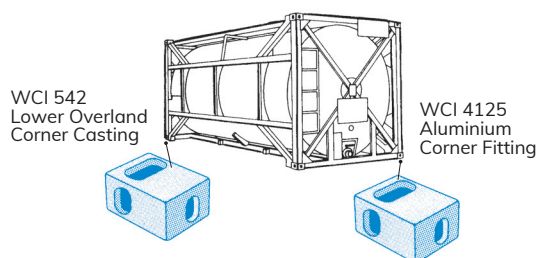
Quadron Container



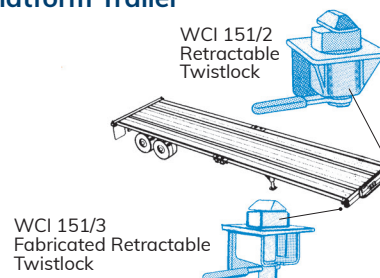
Skeletal Trailer



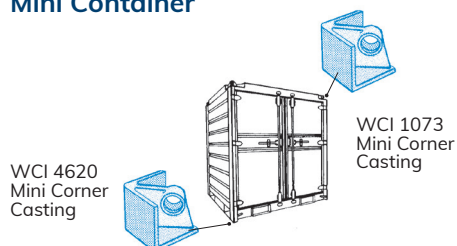
Tanktainer



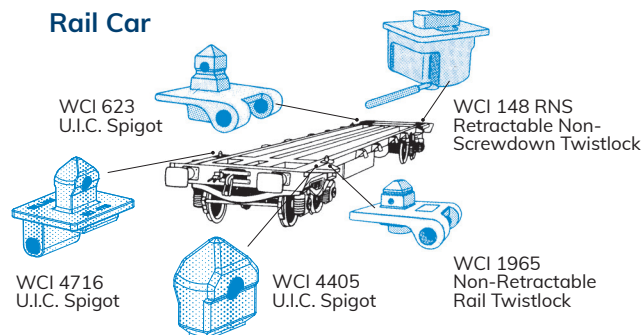
Platform Trailer



Mini Container



Rail Car



Container products for the transport industry

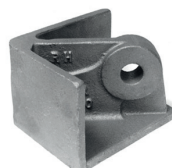
A Container product for every application ...



Container Corner Casting

Standard ISO type to suit all requirements. Size 178 x 162 x 118. Also available in stainless steel.

Type WCI 20000 - Lower.
Type WCI 20100 - Upper.



Mini-Box Corner Fitting

Designed specifically for offshore containers with a length to width ratio of 1:1 up to 1.25:1

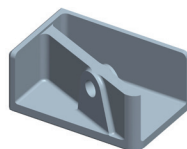
Type WCI 4620.



Mini-Box Corner Fitting

Designed to suit off-shore and mini-containers, this corner fitting is supplied as a one-piece casting, thereby overcoming the inconsistencies commonly associated with fabricated designs.

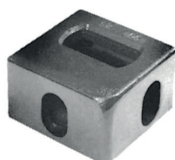
Type WCI 1073.



Lifting Eye

Designed for 20' x 8' boxes.

Type WCI 4588.



Europe - Overland Corner Casting U.I.C.

To meet all requirements for 2.5m wide containers and swap bodies.

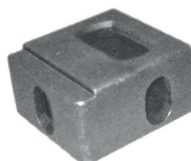
Type WCI 542 - Lower.



Overland Aluminium Lower Container Corner Fitting

To suit 2.5m wide and 2.55m wide tank and bulk containers.

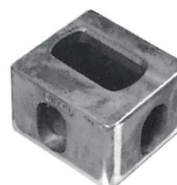
Type WCI 4125 - 2.5m.
Type WCI 4425 - 2.55m.



Europe - Overland Corner Casting U.I.C.

To meet all requirements for 2.55m wide containers and swap bodies.

Type WCI 4450 - Lower.



Aluminium Container Corner Casting

High quality for military shelter and industrial use S.W.L. 3250kg.

Type WCI 1069/1070.



ISO Aluminium Container Corner Fitting

Aluminium corner fitting to meet ISO 1161. Most suitable for use on tank and bulk containers.

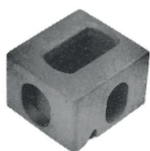
Type WCI 4035 ISO - Upper.
Type WCI 4045 ISO - Lower.



Weldseal Door Hinge

This William Cook Intermodal patented door hinge completely seals against water ingress. When normal welding takes place the heat causes a mastic type sealant on the rear face to expand thus eliminating this known corrosion trap.

Type WCI 500 Series.



High Door Access Corner Fitting

For increasing door height by 32mm.

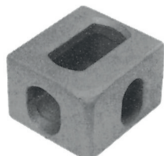
Type WCI 522 - Uppers.



Marine Twistlock

Designed for multiple stacking of containers or swap bodies.

Type WCI 1515.



Container Corner Casting

Standard ISO type to suit German market. Size WCI 91300 - Lower (Height 125mm)

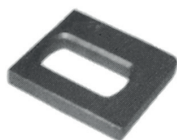
Type WCI 91400 - Upper.



Container Corner Casting ISO Extended Top Aperture

For use on fixed and folding end flatracks.

Type WCI 263.



Twistlock Aperture Casting

This casting has been designed for fabrication into demountable body systems for twistlock securing operations.

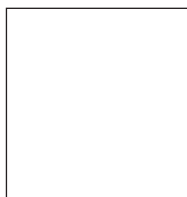
Type WCI 1035.



Top Interconnector

For use in connecting small military containers into 20' units.

Type WCI 4540.



Products to suit your requirements.



Bottom Interconnector

For use in connecting small military containers into 20' units.

Type WCI 1212.

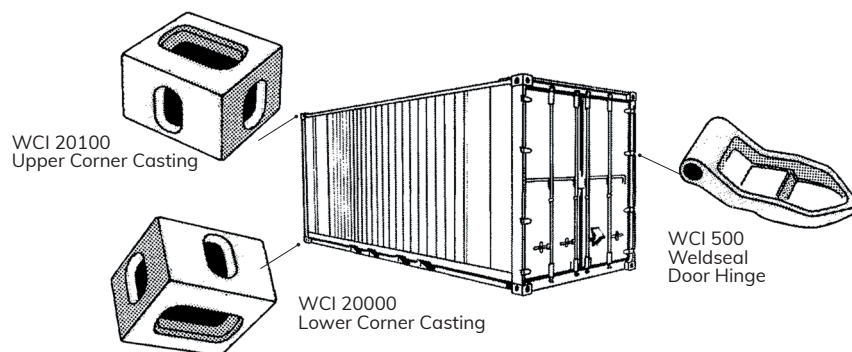
The assurance of choice and performance.

William Cook Intermodal have been supplying container products since the start of containerisation in the mid-1960s. Millions of quality components to meet the most stringent requirements have been supplied. By specifying William Cook, you can be assured of the right product to meet your needs.

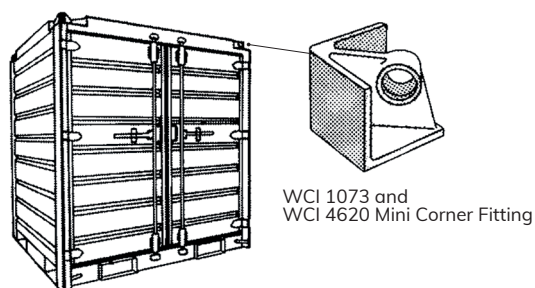
*Due to our policy of continuous product design and development we are regularly increasing our product range.

Container products

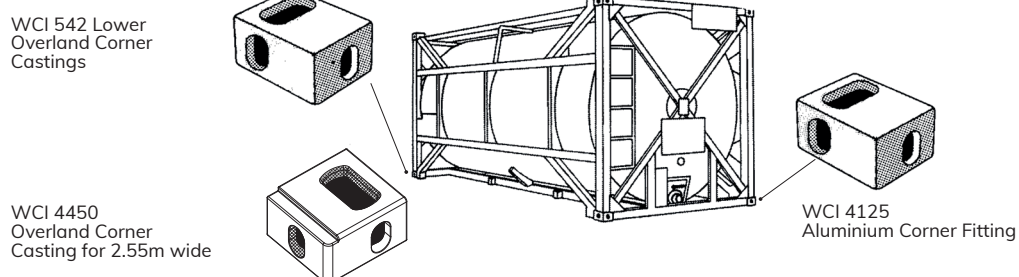
ISO Container



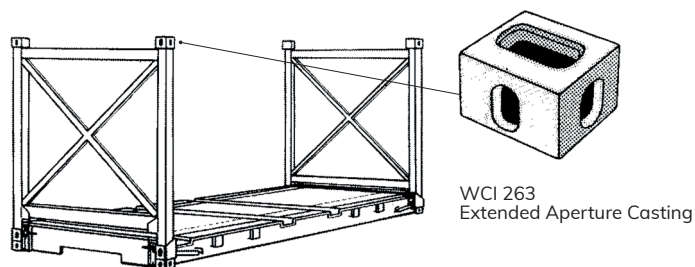
Mini Container



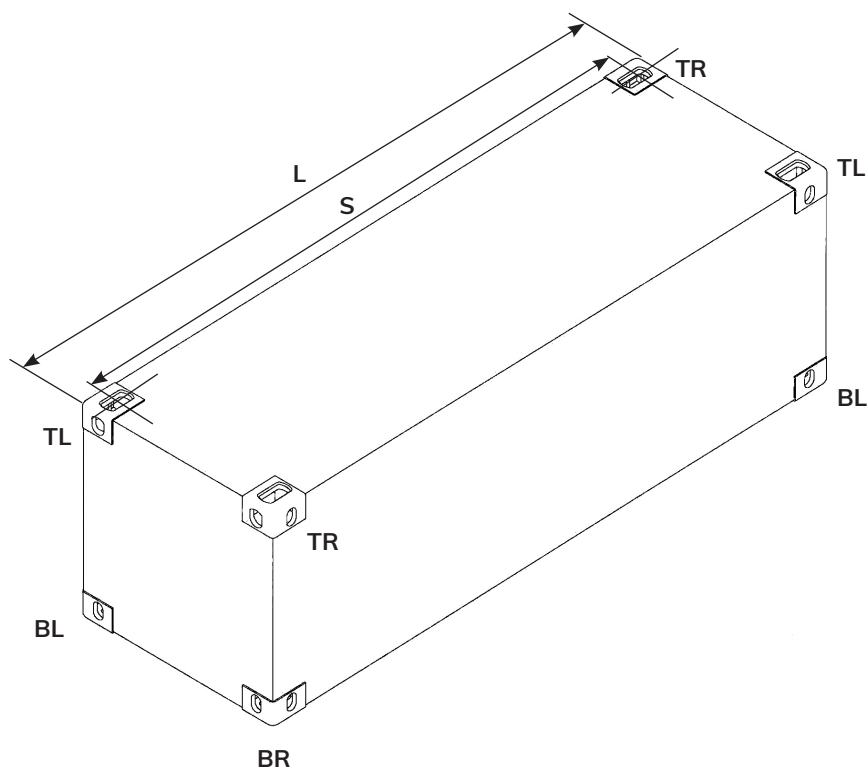
Tanktainer



Flatrack



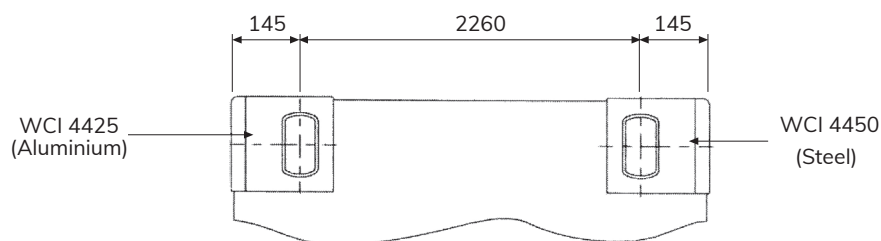
Container dimensions



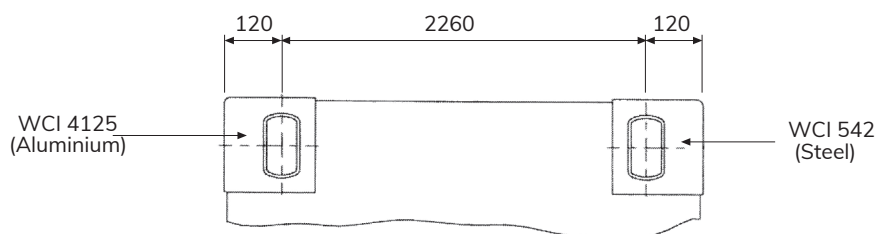
Type of Container	Length	
	L (mm)	S (mm)
ISO 40'	12192 ⁰ / ₋₁₀	11985 ⁺⁴ / ₋₆
ISO 30'	9125 ⁰ / ₋₁₀	8918 ⁺⁴ / ₋₆
ISO 20'	6058 ⁰ / ₋₆	5853 ⁺³ / ₋₅
ISO 10'	2991 ⁰ / ₋₅	2787 ⁺³ / ₋₅

Technical information

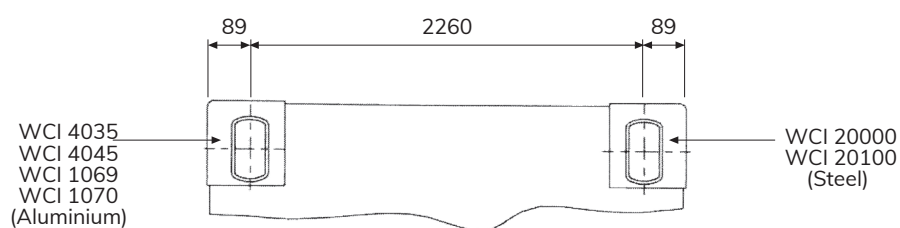
2.55m Wide Container



2.5m Wide Container



Standard 8'-0" Wide ISO Container



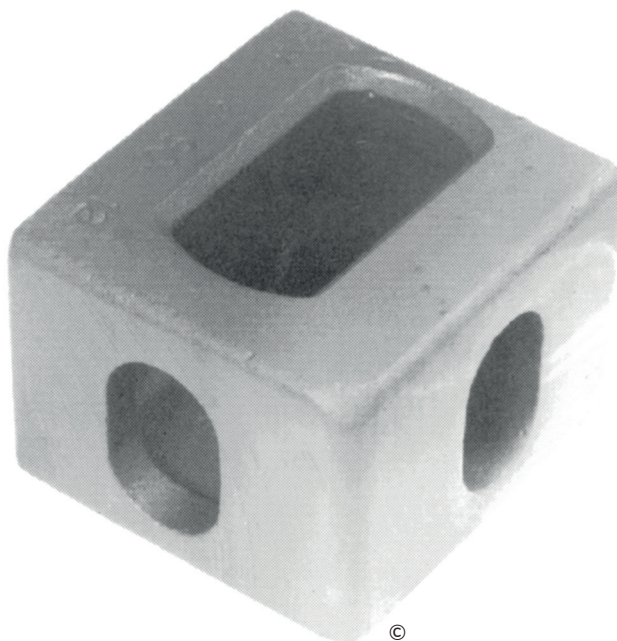
ISO corner castings - Type WCI 20100/WCI 20000

These products are made from special William Cook steel designed for low temperature working at -40°C as standard.

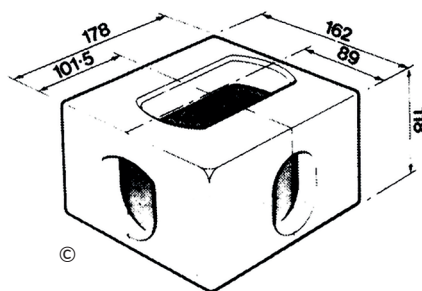
Standard ISO type to suit all requirements.

Made in accordance with ISO 1161/BS 3951 and Lloyds Register Guidance Note A.

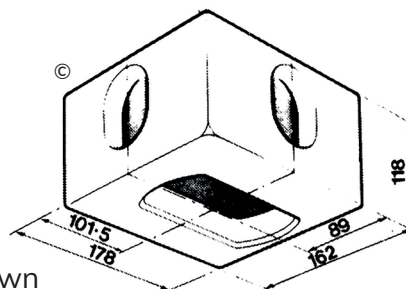
Also available in Stainless Steel.



Top Corner
Type WCI 20100
 Weight 10.5kg (23.0lbs)



Bottom Corner
Type WCI 20000
 Weight 10.5kg (23.0lbs)



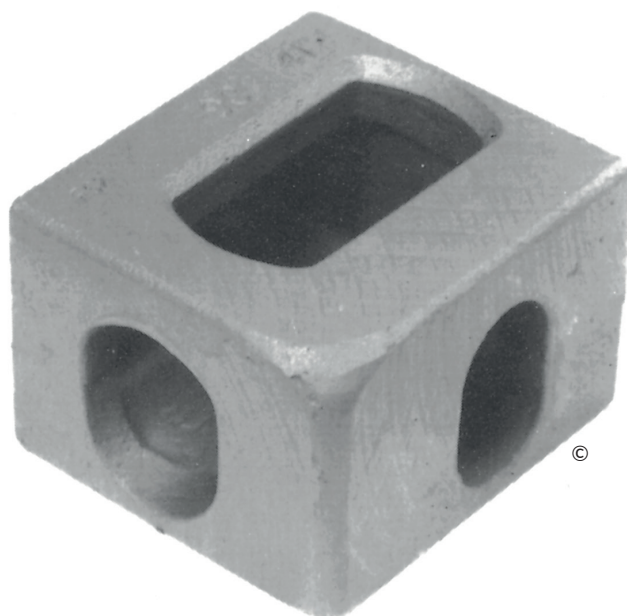
RH as drawn
 LH opposite

ISO corner castings - Type WCI 91400/WCI 91300 (German)

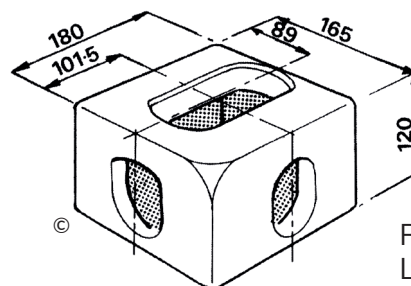
These products are made from special William Cook steel designed for low temperature working at -40°C as standard.

Made in accordance with ISO 1161/BS 3951 and Lloyds Register Guidance Note A.

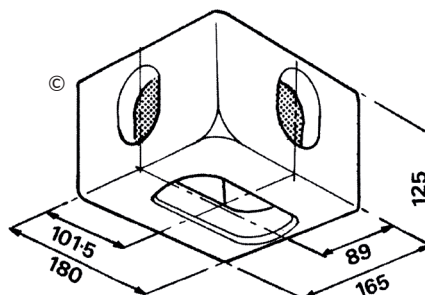
Also available in Stainless Steel.



Top Corner
Type WCI 91400
Weight 11.50kg (25.0lbs)



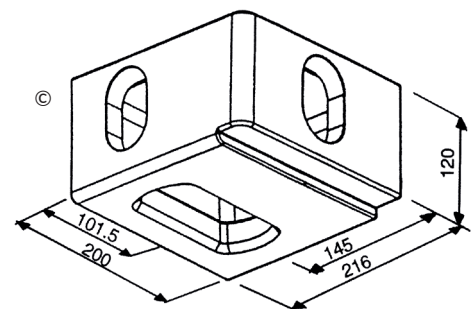
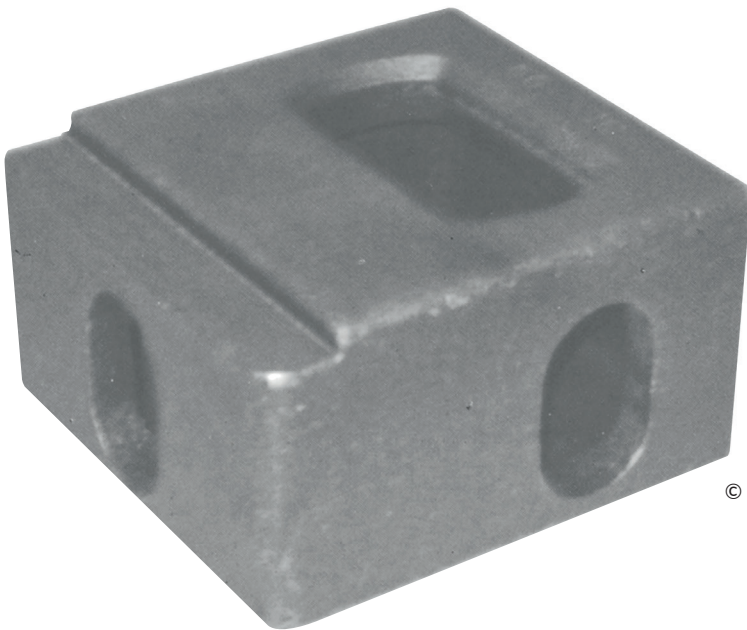
Bottom Corner
Type WCI 91300
Weight 11.75kg (26.0lbs)



Lower corner casting for 2.55m wide containers - Type WCI 4450

This product is made from special William Cook steel designed for low temperature working at -40°C as standard.

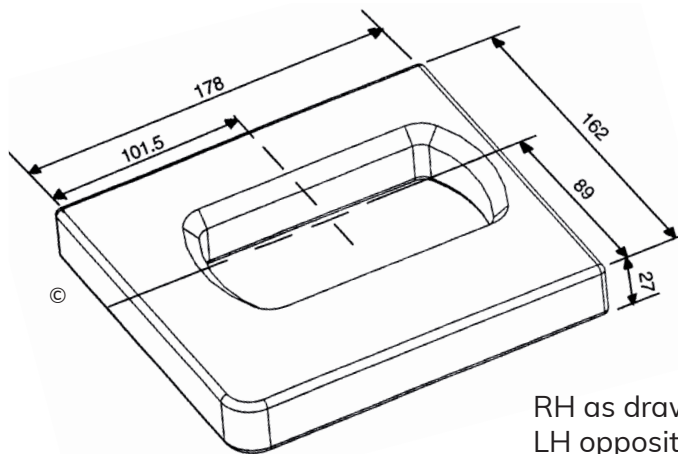
- To suit 2.55 metre wide Dry Freight, Reefer and Tank Containers
- Apertures at ISO Series 1 container positions
- Clearance for trailer lip
- Also available in Stainless Steel and Aluminium.



RH as drawn
LH opposite

Twistlock aperture casting - Type WCI 1035

- Designed for fabrication into de-mountable body systems
- Standard ISO aperture to suit all types of Twistlock head
- Full ISO corner casting footprint.



ISO extended top aperture castings - Type WCI 430 for fixed or folding end flatrack

These products are made from special William Cook steel designed for low temperature working at -40°C as standard.

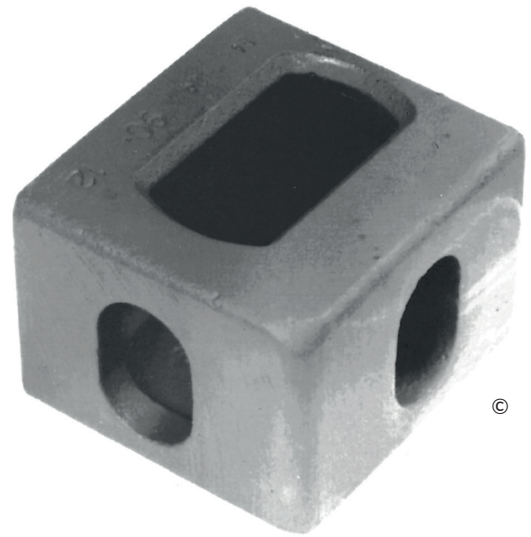
- Classification Society approved
- Extra length top aperture
WCI 430 - ISO + 20mm = 144mm

Offers the user the following important advantages:

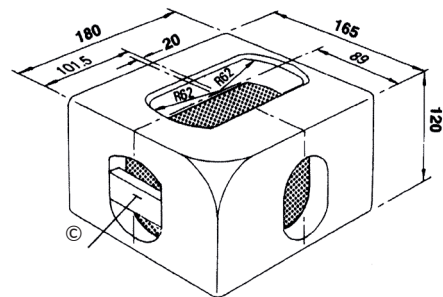
- Longer aperture allows quick spreader location and helps to prevent damage

Note*

- End aperture must be blanked off prior to container going into service, to prevent 'hook lifting'. (Ref: ISO1496-5).



Type WCI 430
Weight 11.1kg (24.4lbs)



See Note*

Flush fit high door access casting - Type WCI 522

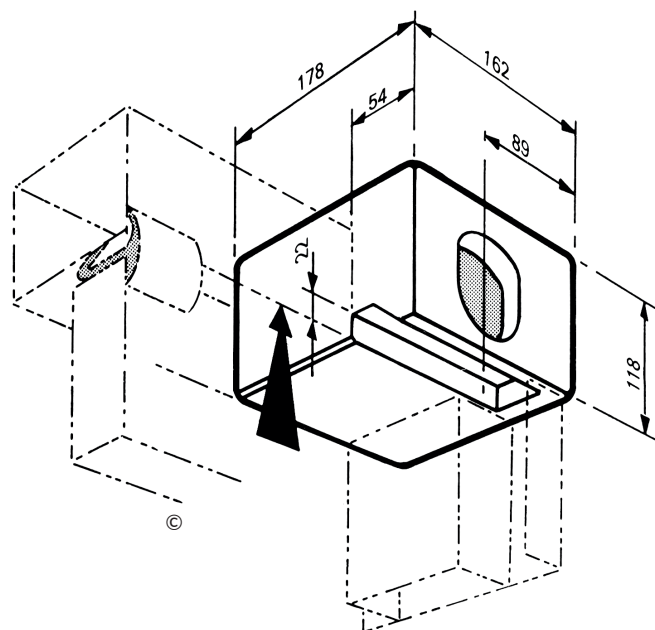
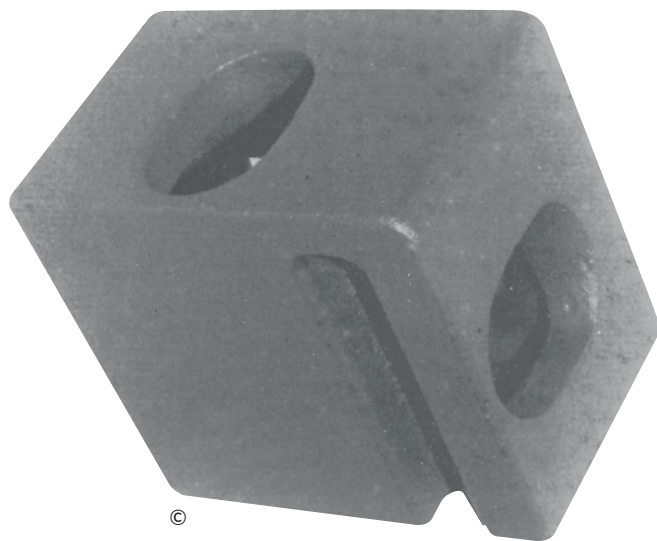
This product is made from special William Cook steel designed for low temperature working at -40°C as standard.

- For use on all ISO Series 1 containers
- Classification Society Approved
- Patents Pending

Offers the user the following important advantages:

- Allows increased door height up to 32mm
- Nine high stacking capability
- Allows reduced welding by up to 30%
- Reduction of time process - header cut square without notching
- Weld preparations on the casting
- Reduction of repair costs - header removed with straight cut.

Type WCI 522
Weight 10.9kg (24.0lbs)

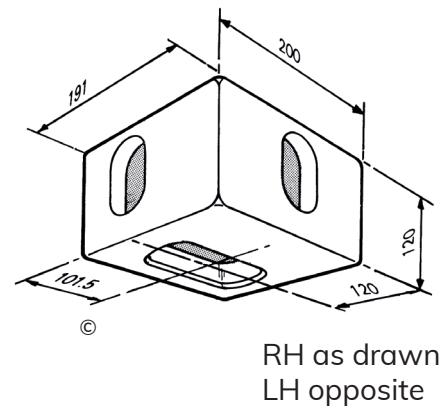
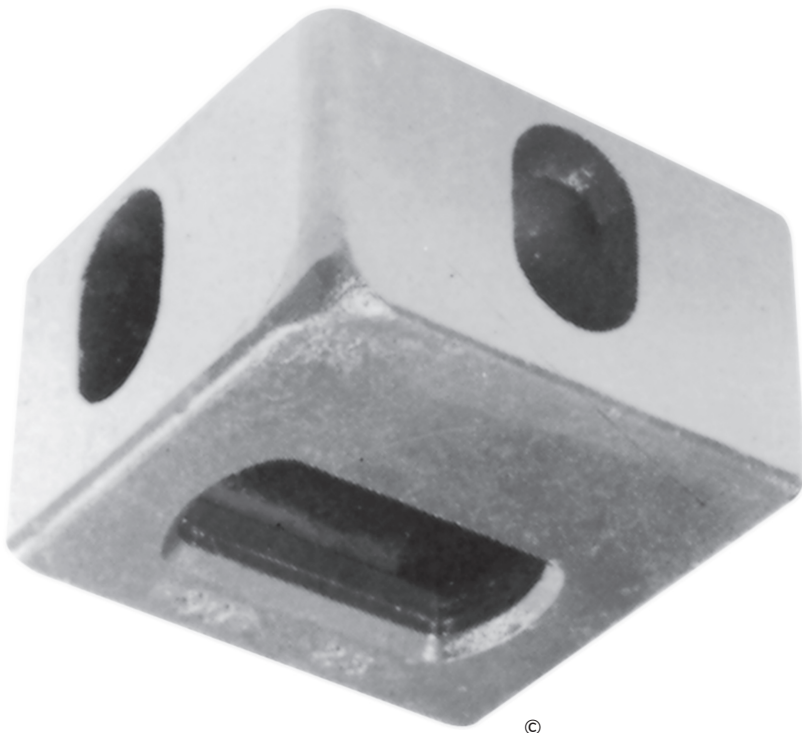


RH as drawn
 LH opposite

European overland corner casting - Type WCI 542

This product is made from special William Cook steel designed for low temperature working at -40°C as standard. For 2.5 metre wide Dry Freight, Reefer and Tank Containers.

Type WCI 542
Weight 14.4kg (31.7lbs)



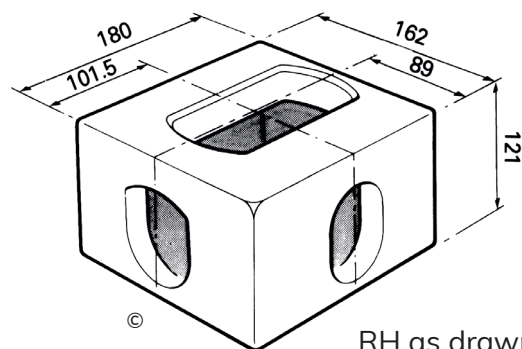
Aluminium corner fittings - Type WCI 4035/4045/4125/4425

These products are designed, manufactured and tested to meet the requirements of ISO1161.

Type WCI 4035

- The Corner Fittings are manufactured from high strength extruded aluminium
- AL-ZN5-MgI with the following mechanical properties.
 - a) Tensile strength = 350N/mm² (34KP/mm²).
 - b) Tensile proof stress = (at 0.2%) 290N/mm² (28KP/mm²).
 - c) Elongation % $5.65 \times \sqrt{\text{area}} = 10\%$.

Top Corner
Type WCI 4035
Weight 4.5kg (10.0lbs)



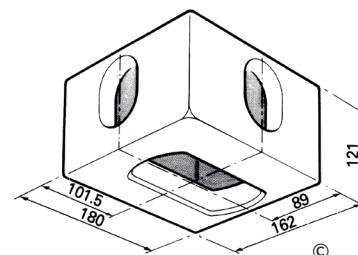
RH as drawn
 LH opposite

14

Aluminium corner fittings

Type WCI 4045

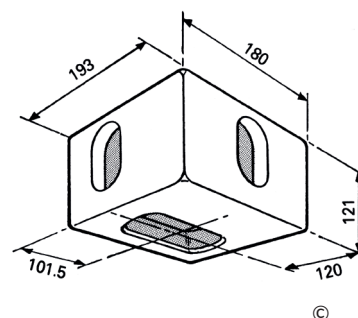
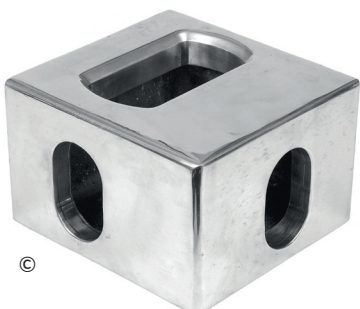
Bottom Corner
Weight 4.5kg (10.0lbs)



RH as drawn
LH opposite

Type WCI 4125 Overland Type

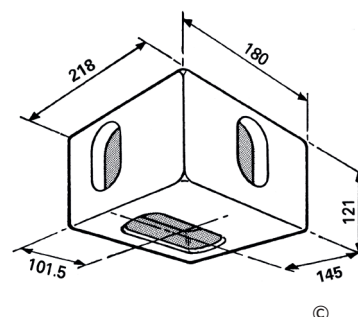
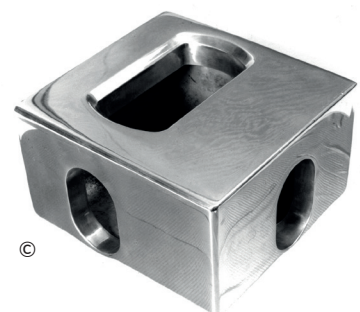
Bottom Corner
Weight 5.0kg (11.16lbs)



RH as drawn
LH opposite

Type WCI 4425 2.55m

Bottom Corner
Weight 5.0kg (11.16lbs)



RH as drawn
LH opposite

Aluminium corner castings - Type WCI 1069/1070

These products are designed for a Safe Working Load of 3250kg and are manufactured to dimensionally comply with ISO1161-1984.

Type WCI 1069 shown below

- For lightweight military shelter and industrial use
- High strength weldable aluminium alloy casting
- Designed for a Safe Working Load of 3250kg
- BS1490 LM25TF.



16



BS EN ISO 9001:2008
LRQ 4006347

Technical information

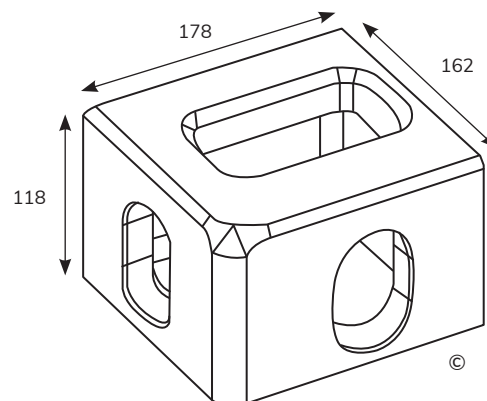
Type WCI 1069

- Lower corner casting.

Weight 4kg (8.9lbs).

S.W.L. 3250kg (7150lbs).

Left hand corner drawn, right hand opposite.



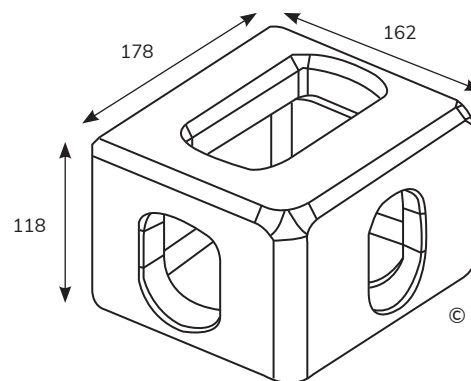
Type WCI 1070

- Upper corner casting.

Weight 4kg (8.9lbs).

S.W.L. 3250kg (7150lbs).

Right hand corner drawn, left hand opposite.



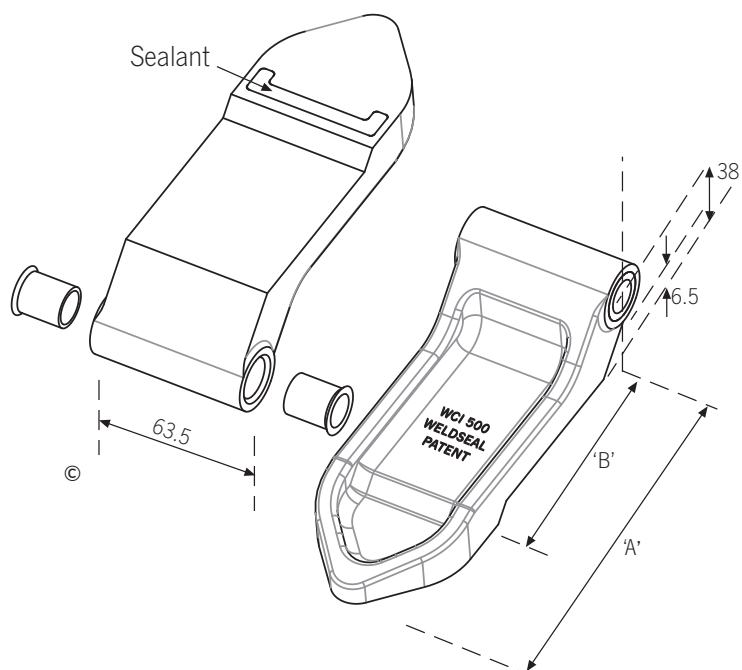
Weld seal door hinge - Type WCI 500

- Container Door Hinge complete with heat reacting sealant
- Automatically seals well known container door corrosion trap behind the hinge
- Sealant expands up to 100% during welding
- Self-lubricating nylon bushes, gives smooth door operation
- Available in self colour, galvanised and electroplate surface finish
- Mounting brackets and stainless steel hinge pin can be supplied extra
- Worldwide patents.



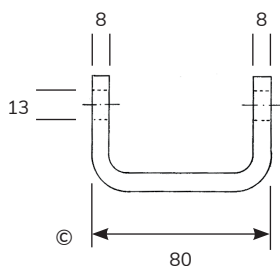
Technical information

	Dim A	Dim B
WCI 500/111	111	57
WCI 500/130 ER	130	72
WCI 500/150 ER	150	90

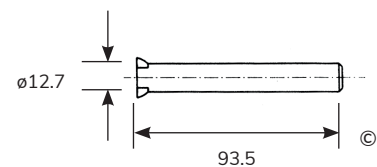
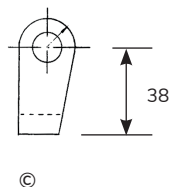


Hinges can also be supplied to customers own design/ dimensions

Hinge Fittings



WCI 4383 Hinge Bracket

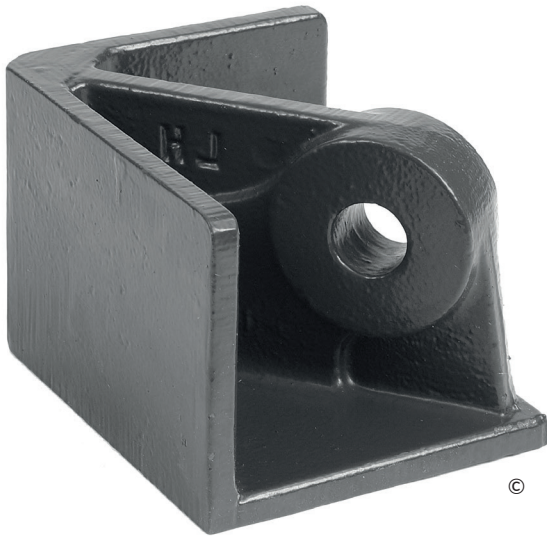


WCI 982 Stainless Steel Hinge Pin

Mini box corner fittings - Type WCI 1073, 4620, 4588

These products are made from special William Cook steel designed for low temperature working at -40°C as standard.

- To suit off-shore and mini containers
- To suit angled or vertical lift slings
- Robust design ensures long life
- Design allows stacking of containers
- One piece casting.



Type WCI 1073



Type WCI 4620



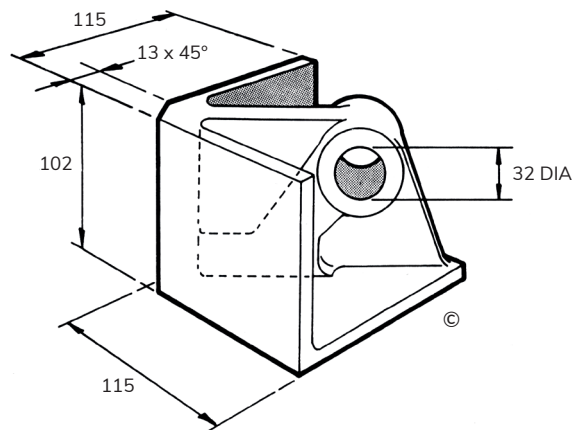
Type WCI 4588

Technical information

Type WCI 1073

- To suit square boxes
- 32.5mm boss width
- Designed for a safe working load 3250kg.

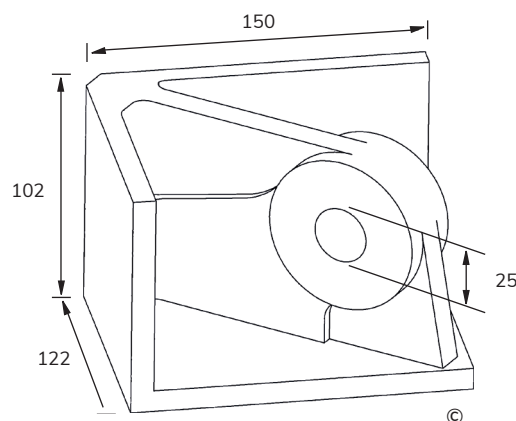
Weight 4.2kg (9.3lbs)



Type WCI 4620

- To suit 6' x 5' and 10' x 8' boxes
- 31mm boss width
- Designed for a safe working load 5000kg.

Weight 5.7kg (12.5lbs)



Type WCI 4588

- To suit 20' x 8' boxes
- 38mm boss width
- Designed for a safe working load 8500kg.

Weight 14.8kg (32.6lbs)

